
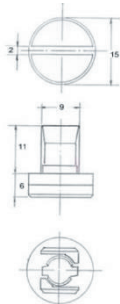
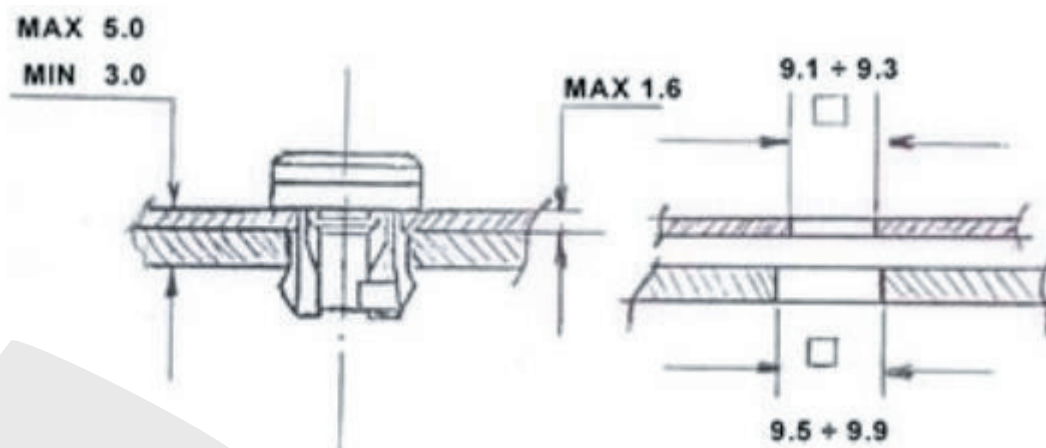
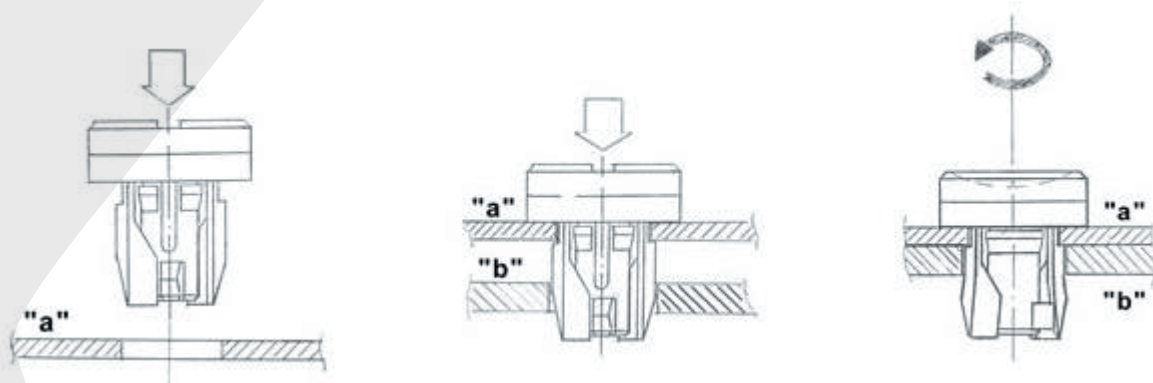


Style	Dimensions	Materials / Finish	°C	Part N°
Screw 		Plastic PA66 Black (T= 3.0 – 5.0)	-25 up to +90	LOPFITLS-3050PB

Installation dimensions of LOPFITLS-3050PB



Installation instruction:



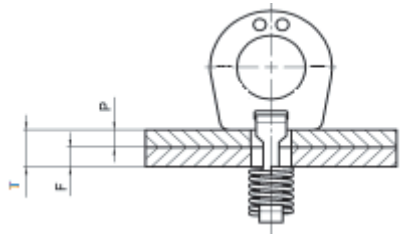
Light duty One Piece Push Turn Close TurnLock series – LOPPTCTL series

Operation by hand installation.

By using the single-hole mounting the installation is very easy.


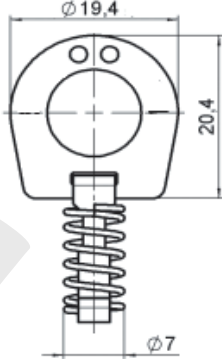

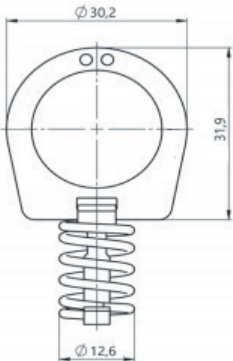
Assembly absorbs shock and vibration.

Due to the small panel thickness where the parts can be applied, this assembly is ideal for sheet metal panel applications.



LOPPTCTL-1Z : T = P + F Tmax = 6.35 mm Tmin = 1.35 mm

LOPPTCTLB-1Z : T = P + F Tmax = 6.00 mm Tmin = 1.00 mm

Style	Dimensions	Materials / Finish	°C	Part N°
Regular style 		Steel / zinc-plated, CrVI-free transparent, Iricident passivated and sealed	120	LOPPTCTL-1Z
Big style 		Steel / zinc-plated, CrVI-free transparent, Iricident passivated and sealed	120	LOPPTCTLB-1Z