

Swivel feet plates extended plastic

Item description/product images



Description

Material:

Plates, thermoplastic, fibreglass reinforced.
Anti-slip plate thermoplastic elastomer.

Version:

black.

Note:

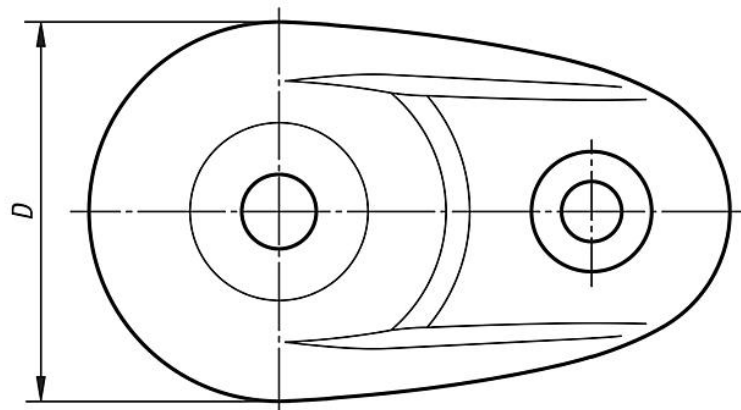
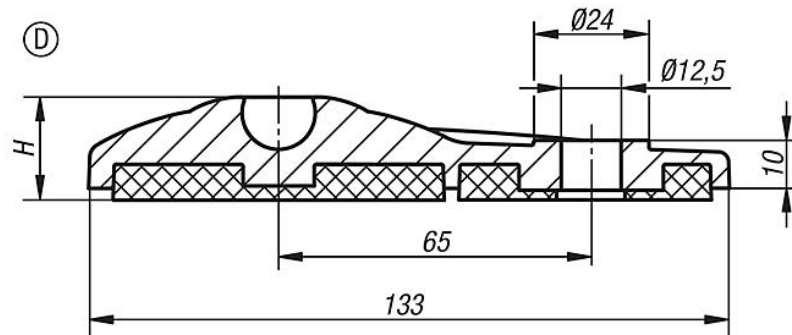
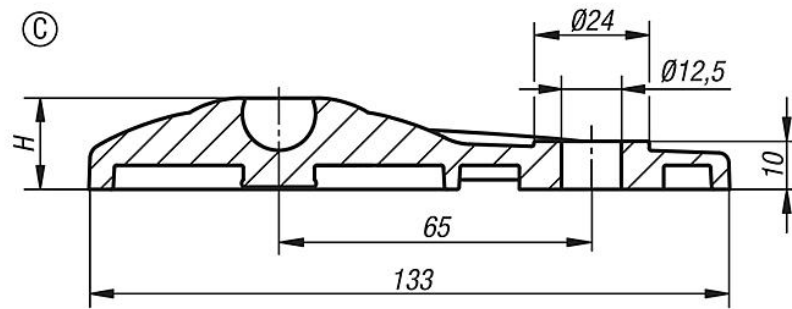
Swivel feet consist of a plate and a threaded spindle or ball joint. Any plate can be combined with any threaded spindle or ball joint. The anti-slip plate absorbs vibrations and prevents the swivel foot slipping.
For matching threaded spindles see K0421.
For matching ball joints see K0422.

Drawing reference:

Form C with screw-on hole, without anti-slip plate
Form D with screw-on hole, with anti-slip plate

Swivel feet plates extended plastic

Drawings



Overview of items

Swivel feet plates extended, plastic

Order No.	Form	D	H	Load rating max. kN
K0654.30803	C	80	19	30
K0654.40803	D	80	21	30

