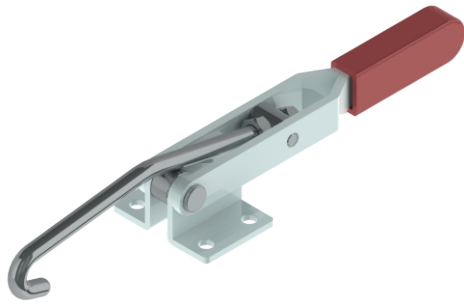
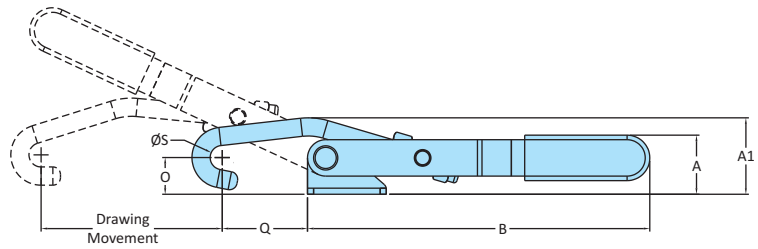
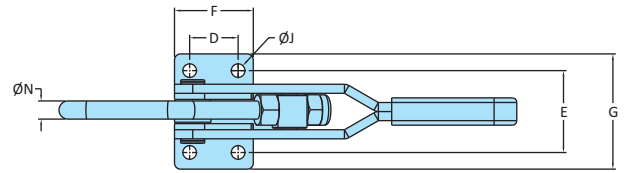


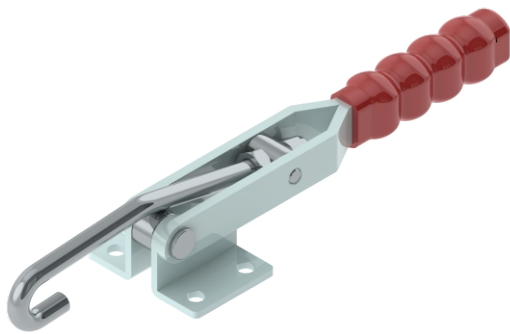
Pull Action Clamps
PA Series



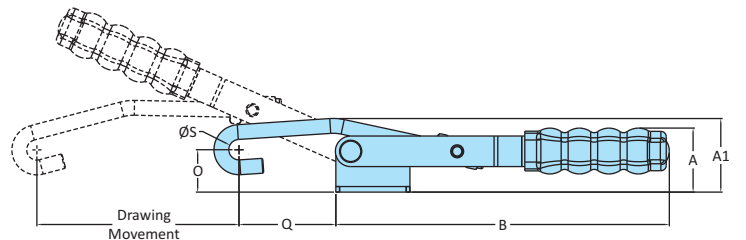
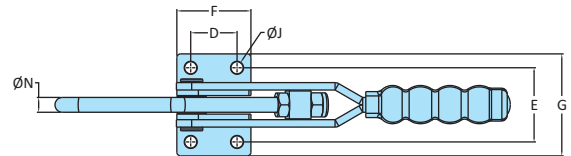
Model No. PA - 1010



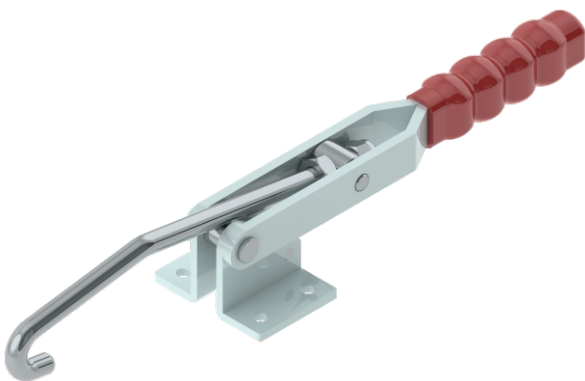
Drawing of PA-1010



Model No. PA - 2056



Drawing of PA-2056



Model No. PA - 3580

Model No	Material	Finish	Base Type	Drawing Movement	J Rod Part Number	Holding Capacity
PA-1010	Steel	Zinc Plated	Flanged Base	60	M68635J	0.70 kN
PA-2056	Steel	Zinc Plated	Flanged Base	109	M814740J	2.00 kN
PA-3580	Steel	Zinc Plated	Flanged Base	137	M1019950J	3.90 kN
PA-4575	Steel	Zinc Plated	Flanged Base	145	M1213670J	4.90 kN
PA-2056-SS	Stainless Steel-304	Electro Polishing	Flanged Base	109	M814740J-SS	2.00 kN

Model No	Weight Kgs	Dimensions												
		A	A1	B	D	E	F	G	J	N	O	Q Min	Q Max	S
PA-1010	0.120	19.5	25	113	16	27	26	38	4.5	6	12	20	28	8
PA-2056	0.370	33.5	39.5	180	25	40	40	55	6.5	8	23	45	52	11
PA-3580	0.750	51	59.5	230	30	48	49	67	6.5	10	34	88	109	12
PA-4575	0.950	64	70.5	276	29	60	54	85	10.5	12	49	91	108	12
PA-2056-SS	0.370	33.5	39.5	180	25	40	40	55	6.5	8	23	45	52	11