

Hinges weldable, stainless steel

Item description/product images



Description

Material:

Stainless steel 1.4301 (AISI 304 equivalent).

Version:

Bright.

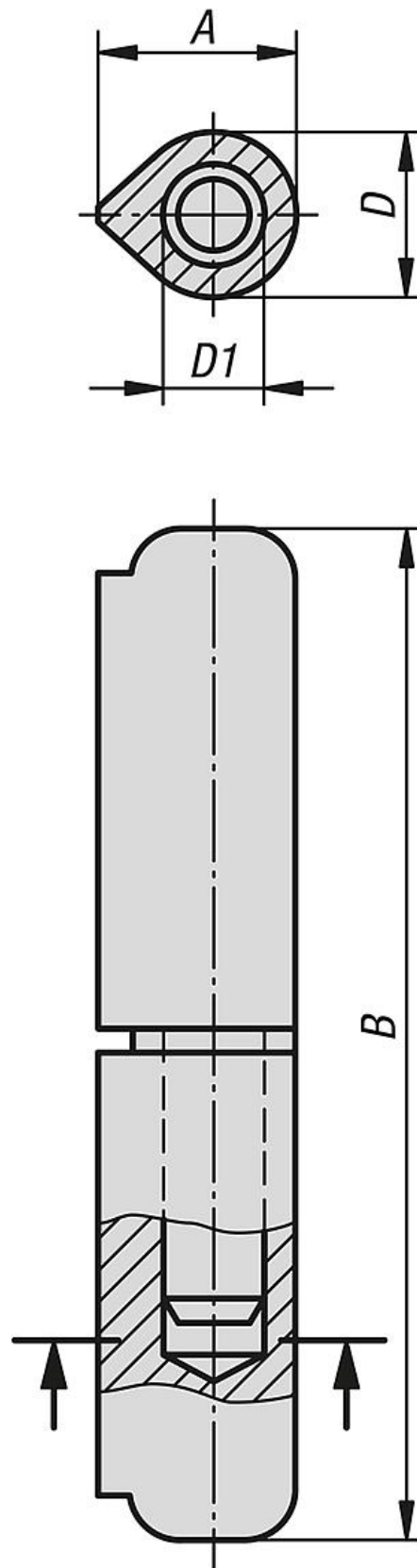
Note:

The hinges are made of weldable profile steel.

The pin is fixed into the lower part of the hinge.

The differing steel qualities of the weld and the beam onto which the hinge is welded must be at least equal to or better than:

Stainless steel 1.4301.



Hinges weldable, stainless steel**Hinges weldable, stainless steel**

Item No.	A	B	D	D1
K0985.010060033	12	60	10	6
K0985.013080033	15,5	80	13	8
K0985.016100033	20	100	16	10
K0985.016120033	20	120	16	11
K0985.020150033	25,5	150	20	13
K0985.020180033	25,5	180	20	14