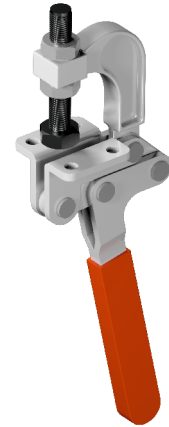
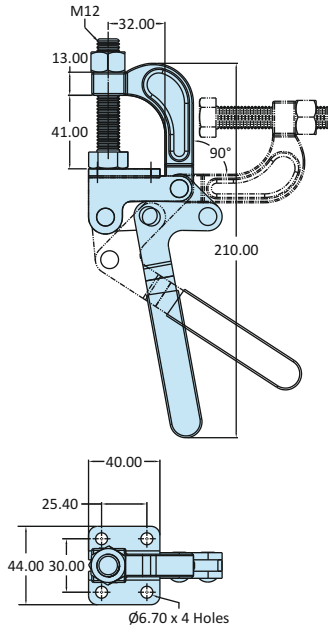


GH-80379

Medium Duty Clamps-Flanged Base

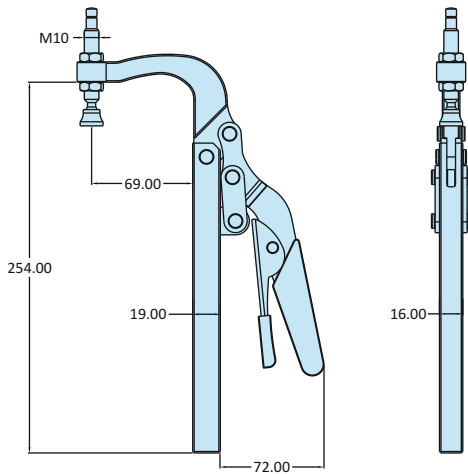
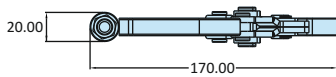
Model No	GH-80379
Weight	0.640 Kgs
Holding Capacity	X - 3.90 kN
Material	Steel
Finish	Zinc Plated
Supplied with Spindle	SH-1265-2N
Model No	GH-80379-SS
Material	Stainless Steel-304
Supplied with Spindle	SH-1265-2N-SS



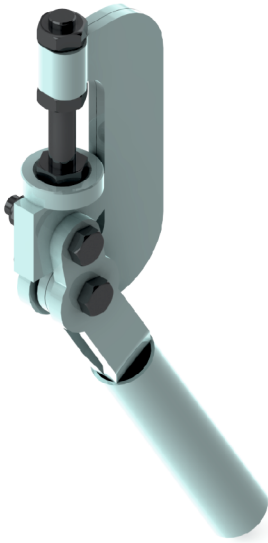
PB-345

Medium Duty Clamps-Square Base

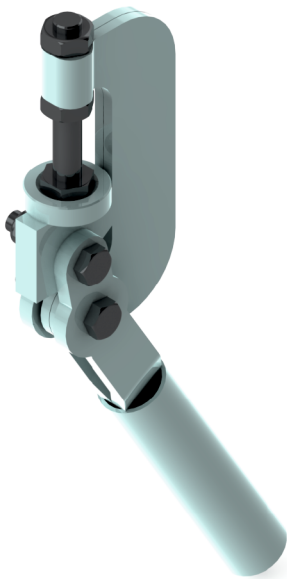
Model No	PB-345
Weight	3.000 Kgs
Holding Capacity	X - 3.40 kN
Material	Steel
Finish	Zinc Plated
Supplied with Spindle	SW-1085-2N



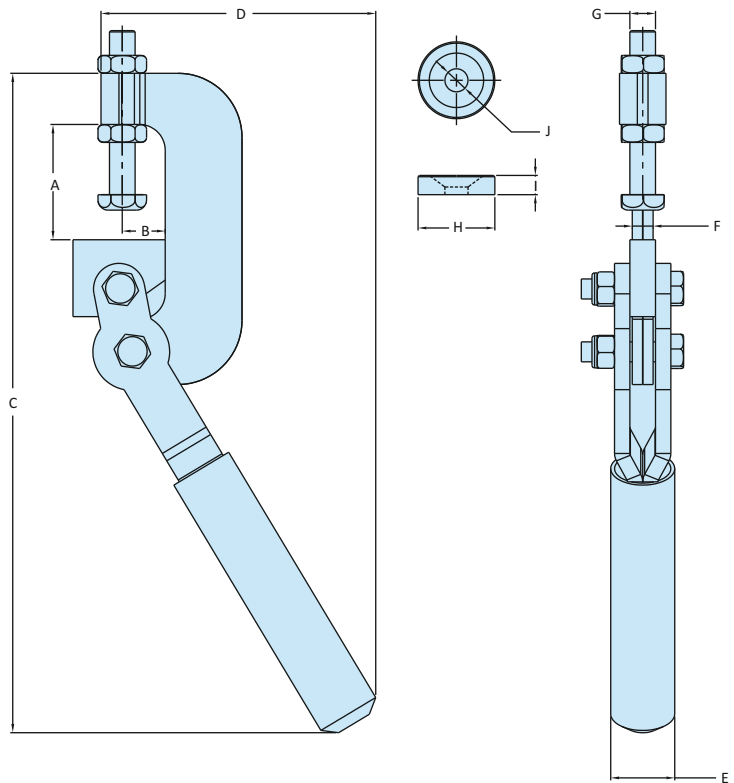
Pull Back Action
C-Type Series Weldable



Model No. PB-3518



Model No. PB-4522



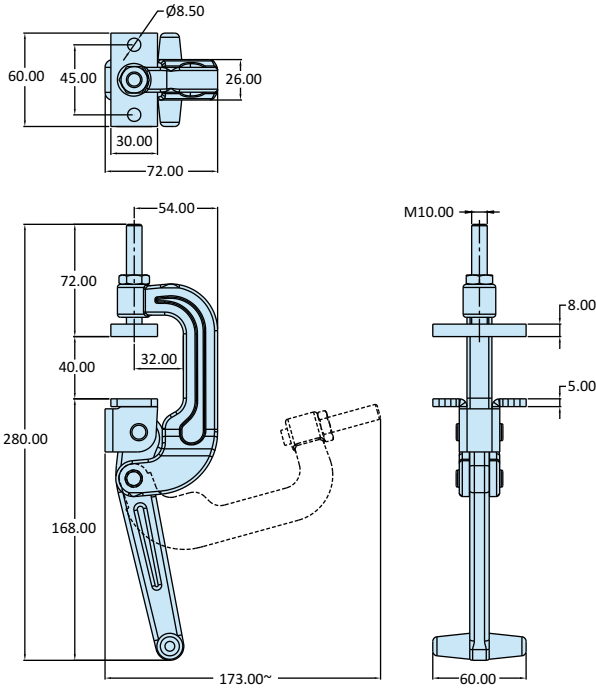
Model No.	Material	Finish	Arm Type	Base Type	Supplied With		Holding Capacity
					Spindle Assembly	Bush	
PB-3518	Steel	Zinc Plated	Spindle Fixed	Weldable	SH-850-2N	CB-3518	1.00 kN
PB-4522	Steel	Zinc Plated	Spindle Fixed	Weldable	SH-1060-2N	CB-4522	2.00 kN
PB-5025-10	Steel	Zinc Plated	Spindle Fixed	Weldable	SH-1075-2N	CB-5025-10	2.90 kN
PB-5025-12	Steel	Zinc Plated	Spindle Fixed	Weldable	SH-1275-2N	CB-5025-12	4.90 kN

Model No	Weight Kgs	Dimensions						
		A	B	C	D	E	F	Thread G
PB-3518	0.250	35	18	195	85	Ø 20	6	M8 x 50
PB-4522	0.890	45	22	270	115	Ø 25	8	M10 x 60
PB-5025-10	1.100	50	25	290	115	Ø 25	10	M10 x 75
PB-5025-12	1.280	50	25	305	115	Ø 25	12	M12 x 75



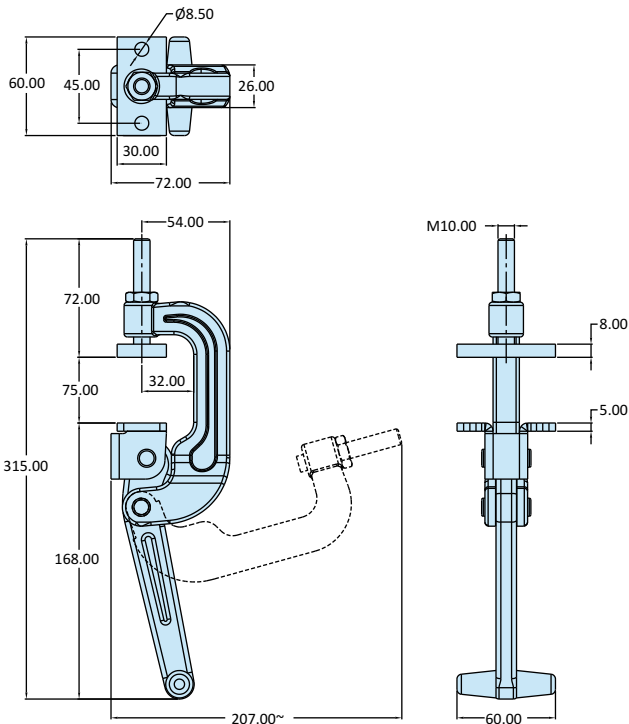
PB-4032-SF
C-Type Series - Flanged Base

Model No	PB-4032-SF
Weight	1.110 Kgs
Opening Angle	66°
Holding Capacity	X - 15.00 kN
Material	Steel
Finish	Black Finish



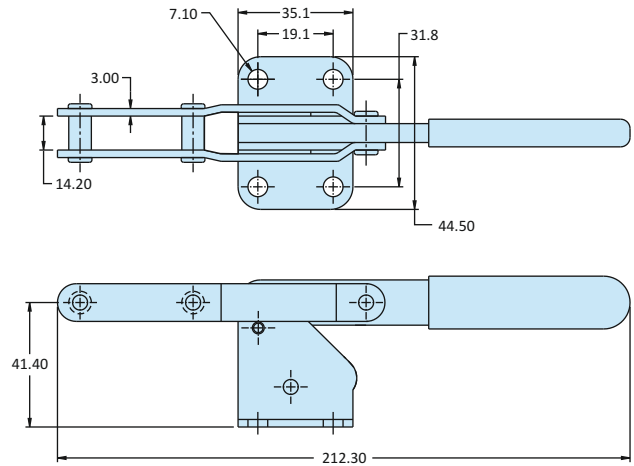
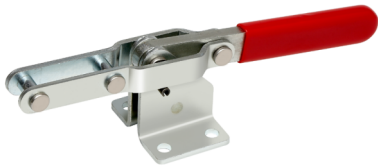
PB-7532-SF
C-Type Series - Flanged Base

Model No	PB-7532-SF
Weight	1.190 Kgs
Opening Angle	66°
Holding Capacity	X - 15.00 kN
Material	Steel
Finish	Black Finish



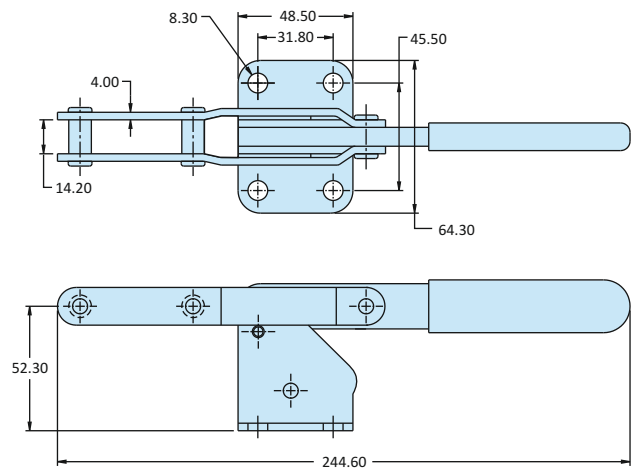
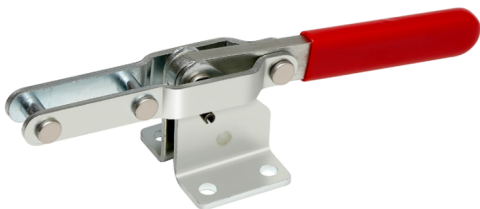
PAH-301
Medium Duty Pull Action Clamps

Model No	PAH-301
Weight	0.300 Kgs
Holding Capacity	X - 1.70 kN
Material	Steel
Finish	Zinc Plated
Drawing Movement	101.0
Base Type	Flanged Base
Model No	PAH-301-SS
Material	Stainless Steel-304



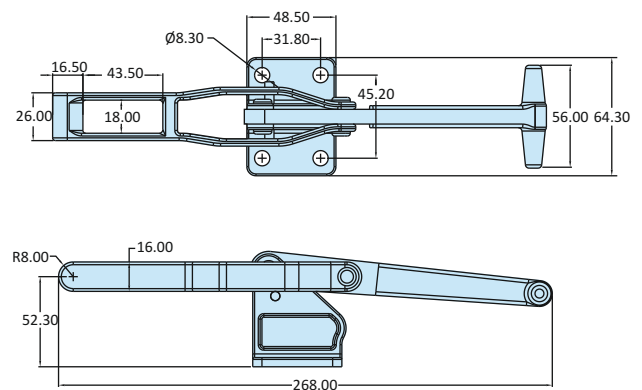
PAH-311
Medium Duty Pull Action Clamps

Model No	PAH-311
Weight	0.300 Kgs
Holding Capacity	X - 5.40 kN
Material	Steel
Finish	Zinc Plated
Drawing Movement	85.0
Base Type	Flanged Base
Model No	PAH-311-SS
Material	Stainless Steel-304



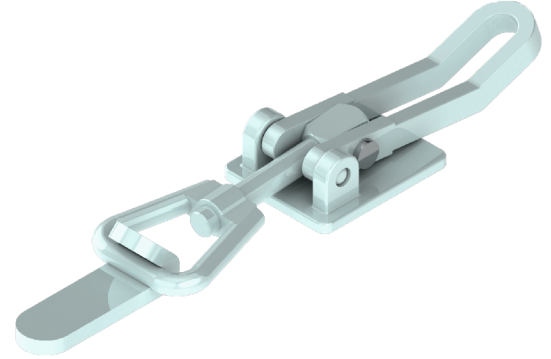
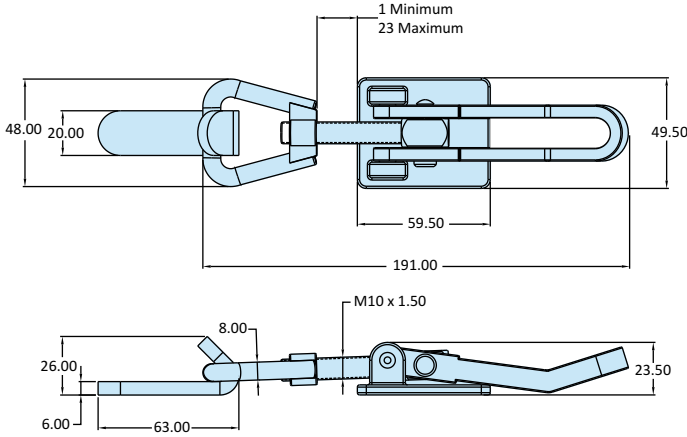
PAH-3018-HV
Heavy Duty Pull Action Clamps

Model No	PAH-3018-HV
Weight	1.000 Kgs
Holding Capacity	X 8.90 kN
Material	Steel
Finish	Zinc Plated
Base Type	Flanged Base



PAH-2816-HV
Medium Duty Pull Action Clamps

Model No	PAH-2816-HV
Weight	0.350 Kgs
Holding Capacity	X 2.90 kN
Material	Steel
Finish	Zinc Plated
Base Type	Flanged Base



PB-4727-SB
Heavy Duty Pull Back Clamps

Model No	PB-4727-SB
Weight	1.100 Kgs
Holding Capacity	X 7.40 kN
Material	Steel
Finish	Zinc Plated
Arm Type	Spindle Fixed
Base Type	Front Mounting Base
Supplied with Spindle	RT-12115-2N
Model No	PB-4727-SB-SS
Material	Stainless Steel-304
Supplied with Spindle	RT-12115-2N-SS

