

BJ330**SCREW JACKS**

[Body]

Material : S45C steel

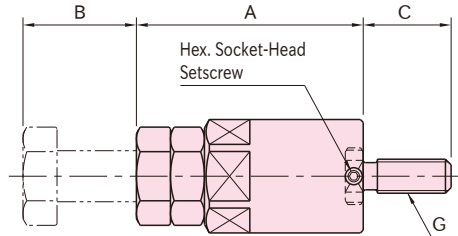
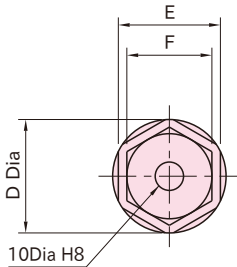
Finish : Black oxide

[Bolt]

Material : SCM435 steel

Heat treat : Quenched and tempered

Finish : Black oxide



Part Number	A	B	C	D	E	F	G	Load Capacity (N)	Weight (g)
BJ330-12040	40	10	30	40	36	30	M12x1.75	31,800	350
BJ330-12050	50	20							420
BJ330-12070	70	40		570					
BJ330-12100	100	50		1,350					
BJ330-12150	150	100		50	46	36		44,900	2,100
BJ330-16040	40	10	30	40	36	30	M16x2	31,800	360
BJ330-16050	50	20							430
BJ330-16070	70	40		580					
BJ330-16100	100	50		1,360					
BJ330-16150	150	100		50	46	36		44,900	2,110

Feature:

A radius Screw—Jack Tip is available. Use with Riser Cylinders for additional height.

How To Use