

Ball lock pins without head

Item description/product images



Description

Material:

Housing and push button steel or stainless steel.
 Ball, spring and snap ring stainless steel.
 O-ring FKM.

Version:

Housing nickel-plated or bright.
 Knob tempered and nickel-plated.
 Ball tempered.

Note:

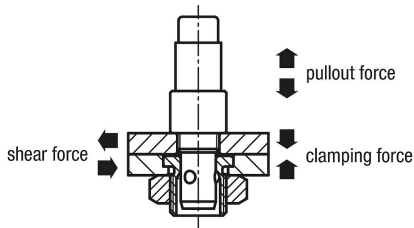
Installation dimensions for Form A for plate thickness 6 mm.
 Installation dimensions for Form B for plate thickness 6 to 16 mm.

Attention:

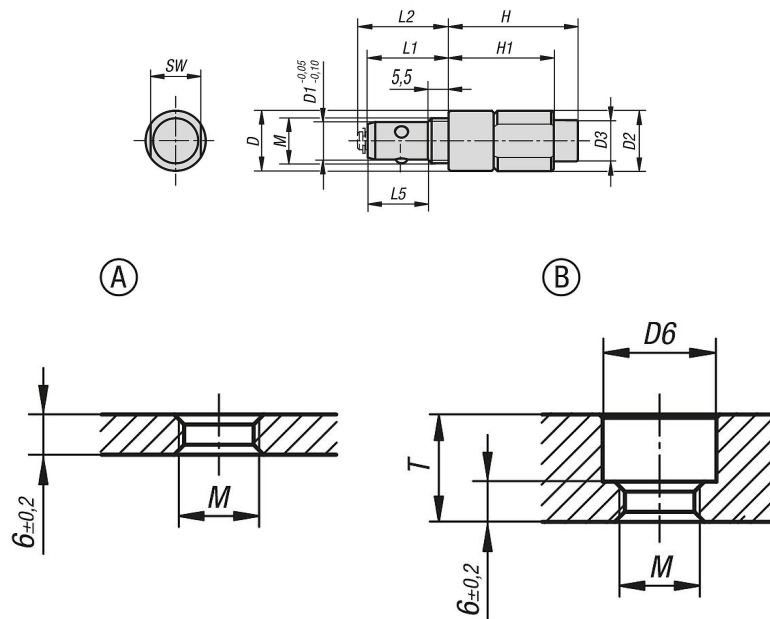
The specified pullout forces only apply in conjunction with locating bush K1065.

Accessory:

Locating bush K1065.



Drawings



Overview of items

Ball lock pins without head

Overview of items

Ball lock pin without head

Order No.	Main material	D	D1	D2	D3	M	L1	L2	L5	H	H1	SW	D6	T max.	Clamping force N	Shearing force kN	Pullout force F kN	Temperature resistance
K1063.6212	steel	12	6	12	8	M8x1,25	19	21	13,5	22	17,5	10	13	10	30	3	0,5	≤180 °C
K1063.10242	steel	16	10	16	11	M12x1,5	21,5	23,5	16	34,4	28	13	17	16	50	9	1,5	≤180 °C
K1063.16212	stainless steel	12	6	12	8	M8x1,25	19	21	13,5	22	17,5	10	13	10	30	3	0,5	≤180 °C
K1063.110242	stainless steel	16	10	16	11	M12x1,5	21,5	23,5	16	34,4	28	13	17	16	50	9	1,5	≤180 °C

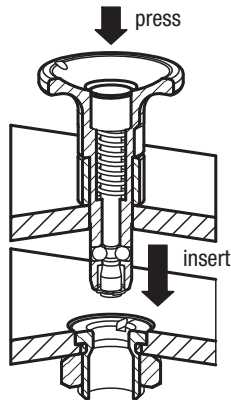
Technical information for ball lock pins K1063, K1064 and locating bushes K1065



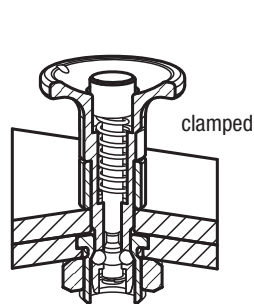
Note:

These are designed to quickly clamp 2 plates.
The system can be used for changing mechanisms in assembly applications or for making other manual adjustments, such as conversions in automatic systems.

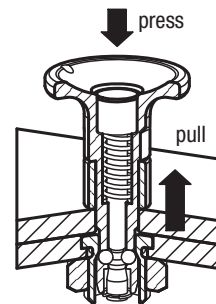
Repeat accuracy of ± 0.25 for screwed-in and pushed-in version.
The repeat accuracy can be increased with the aid of additional locating pins.



With the knob pressed down, insert the ball lock pin into the locating bush.



Release the knob to clamp the plates.

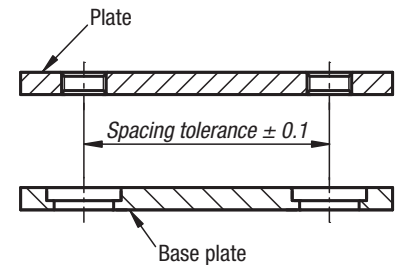


To remove, press the knob down and pull the ball lock pin out of the bush.

Assembly:

The mounting situation is customer specific. Plates of different thicknesses can be joined. The different mounting options form A to D are described on the product pages.

Recommended tolerances when using 2 items

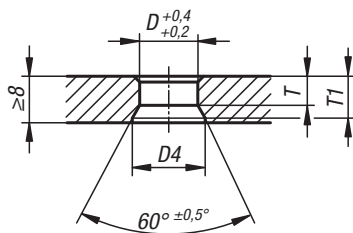


Application without locating bush

Installation dimensions

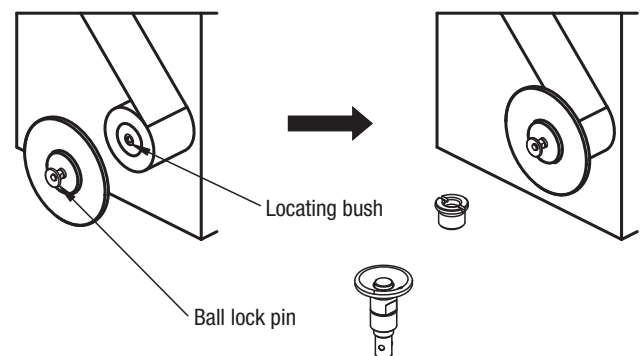
Attention:

The specified pullout forces only apply in conjunction with locating bush K1065.



Application example:

Quick installation and removal of flange plates for paper rolls.



For ball lock pin D =	D	D4 min.	T	T1
6	6	8	4,9	~6,6
10	10	12,5	5	~7,2