

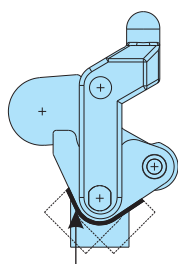
## H.V. Series Toggle Clamps

### Swivel Base

The H.V. Series Toggle Clamps comprise of a basic toggle mechanism onto which can be welded at a desired angle, the clamping arm and handle which are supplied with the clamp. These models feature a swivel base which is welded at the desired angle to the mechanism, then welded either directly to the fixture or alternatively to a base which is offered as an accessory for bolt mounting. The clamping arm exhibits 180 degree opening angle which enables easy unloading of work piece. Accurately machined steel components are equipped with hardened bushes & pivot pins. Three sizes basic linkages are available which allows the designer complete flexibility to position the base, clamp arm handle and weld them to suit the application.

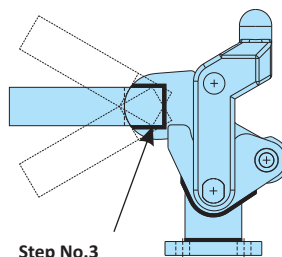
#### Installation:

When welding the swivel base of the clamp mechanism ensure that the full length of the adjoining surfaces are welded. Ensure that the welding splatters do not enter the slots which form the forward stop of the mechanism.



#### Step No.1

Weld the Swivel Base at a desired Angle

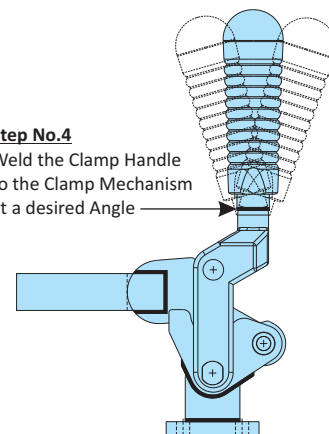


#### Step No.3

Weld the Clamping Arm to the Clamp Mechanism at a desired Angle

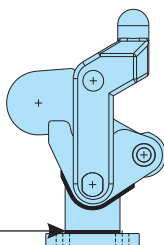
#### Step No.4

Weld the Clamp Handle to the Clamp Mechanism at a desired Angle



#### Step No.2

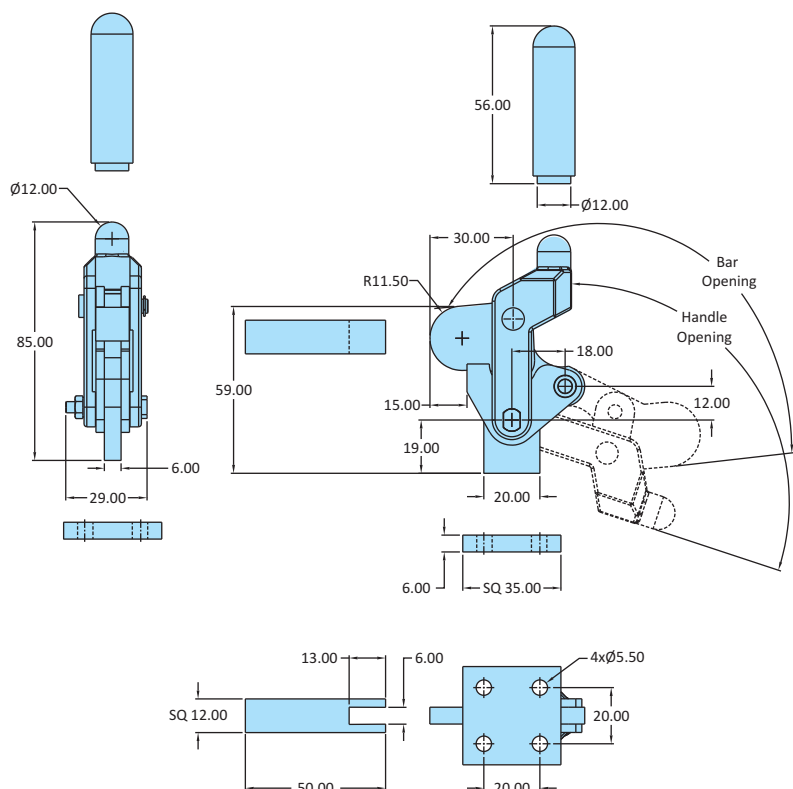
Weld the Base Plate to the Swivel Base



## H.V. Series Toggle Clamps

### Swivel Base

Model No	HV-BII-100
Weight	0.340 Kgs
Handle Opening ( $\pm 3^\circ$ )	110°
Clamp Bar Opening ( $\pm 3^\circ$ )	180°
Holding Capacity	2.00 kN
Material	Steel
Finish	Black ED* Coating
Arm Type	Solid Arm
Base Type	Swivel Base



Clamp is supplied in separate parts

