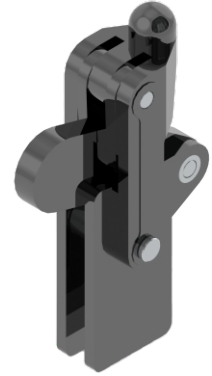
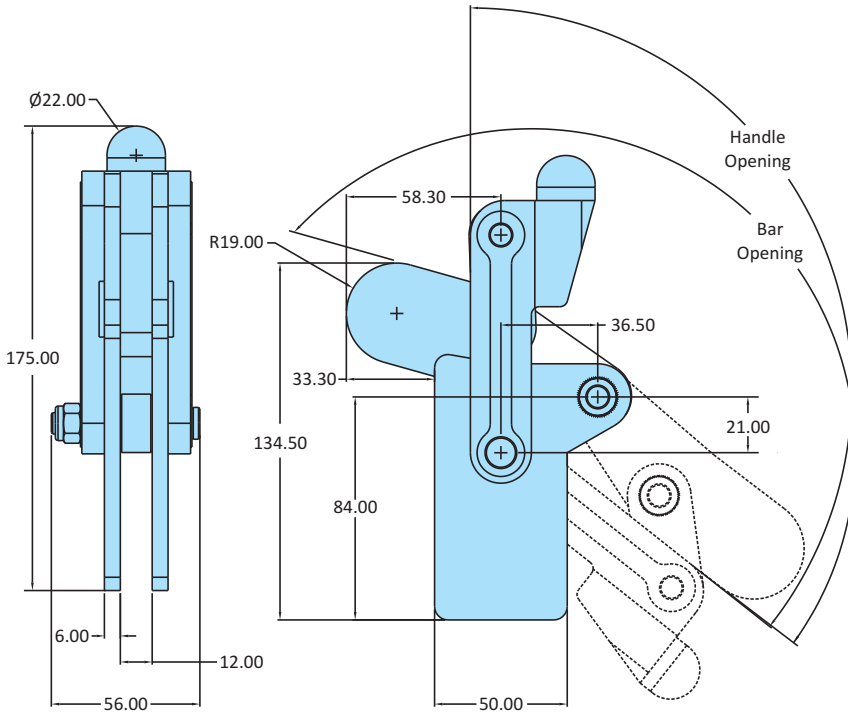


H.V. Series Toggle Clamps
Straight Base

Model No	HV-1200-T
Weight	1.520 Kgs
Handle Opening ($\pm 3^\circ$)	130°
Clamp Bar Opening ($\pm 3^\circ$)	195°
Holding Capacity	11.80 kN
Material	Steel
Finish	Black ED* Coating
Arm Type	Solid Arm
Base Type	Straight Base



H.V. Series Toggle Clamps
Straight Base

Model No	HV-1200-1A
Weight	1.960 Kgs
Handle Opening ($\pm 3^\circ$)	131°
Clamp Bar Opening ($\pm 3^\circ$)	207°
Holding Capacity	11.80 kN
Material	Steel
Finish	Black ED* Coating
Arm Type	Solid Arm
Base Type	Straight Base
Supplied With Spindle	RT-12115-2N

