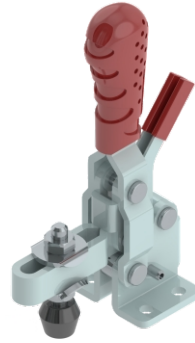
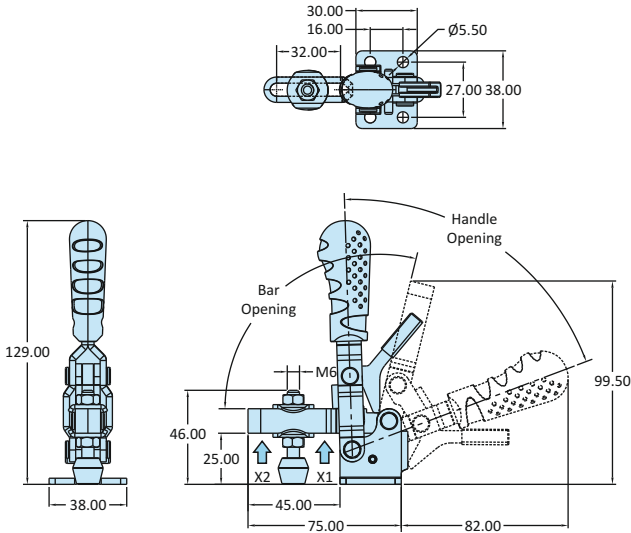
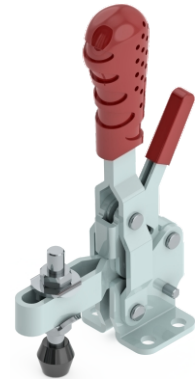
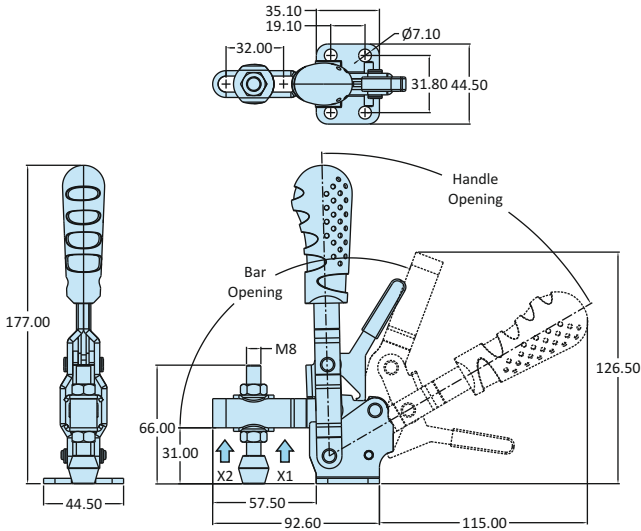


Vertical Hold Down Action
With Additional Locking Mechanism



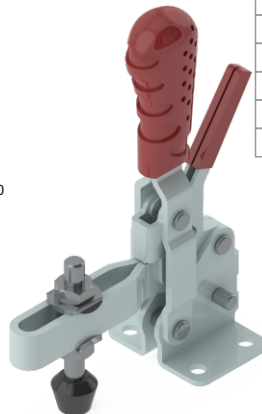
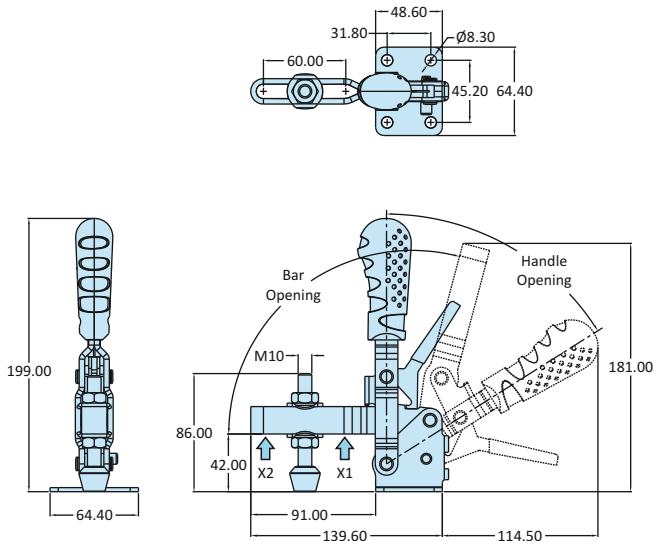
Model No	VTC-2535-UB-TRIG
Weight	0.220 Kgs
Handle Opening ($\pm 3^\circ$)	64°
Clamp Bar Opening ($\pm 3^\circ$)	104°
Holding Capacity	X1 - 1.00 kN
	X2 - 0.50 kN
Material	Steel
Finish	Zinc Plated
Arm Type	Adjustable Arm
Base Type	Flanged Base
Supplied with Spindle	RT-645-2N2W
Model No	VTC-2535-UB-TRIG-SS
Material	Stainless Steel-304
Supplied with Spindle	RT-645-2N2W-SS

Vertical Hold Down Action
With Additional Locking Mechanism



Model No	VTC-207-U-TRIG
Weight	0.390 Kgs
Handle Opening ($\pm 3^\circ$)	63°
Clamp Bar Opening ($\pm 3^\circ$)	115°
Holding Capacity	X1 - 1.70 kN
	X2 - 1.00 kN
Material	Steel
Finish	Zinc Plated
Arm Type	Adjustable Arm
Base Type	Flanged Base
Supplied with Spindle	RT-865-2N2W

Vertical Hold Down Action
With Additional Locking Mechanism



Model No	VTC-210-U-TRIG
Weight	0.720 Kgs
Handle Opening ($\pm 3^\circ$)	58°
Clamp Bar Opening ($\pm 3^\circ$)	106°
Holding Capacity	X1 - 2.70 kN
	X2 - 1.40 kN
Material	Steel
Finish	Zinc Plated
Arm Type	Adjustable Arm
Base Type	Flanged Base
Supplied with Spindle	RT-1085-2N2W