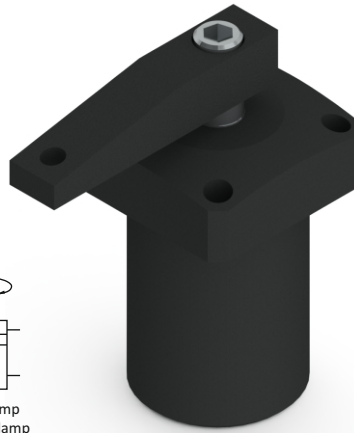
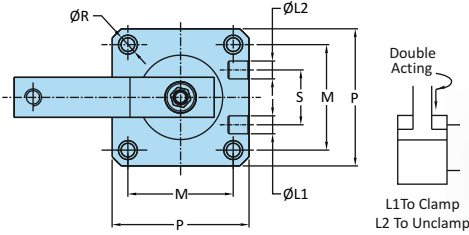
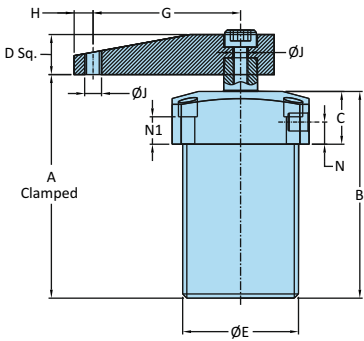


**Pneumatic Swing Clamp
Upper Flange Version-Right Swing**

- No Fixture hole required
- Cylinder can be bolted directly to the fixture
- Easiest mounting preparation in the swing clamp line
- Square flange design enables clamping at all four sides of the clamp
- Allows extra large parts to be clamped

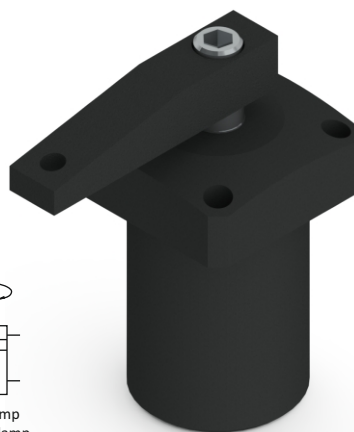
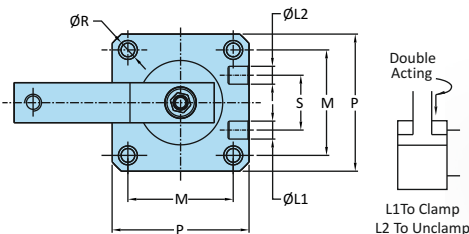
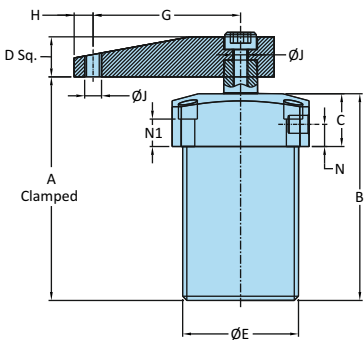


Material	Aluminum Alloy Body
Finish	Black Anodizing
Acting Type	Double Acting
Force	16 - 140 kgs
Total Stroke	27-32 mm
Working Pressure	4 - 7 Bar
Swivel Angle	90° ±2°

Model No	Weight Kgs	Dimensions																			
		Piston Dia.	Bore Dia.	Swing Stroke	Clamping Stroke	Force in Kgs (5 kg/cm ²)	A Clamped	B	C	D	E	G	H	J	L	M	N	N1	P	R	S
SC-25-NPUF-R	0.700	14	25	14	14	16	92	87	25	16	M40 x 1.5	50	6	M6	M5	37	11.5	14.5	50	5.5	23
SC-32-NPUF-R	0.800	16	32	14	16	30	103	98	25	19	M50 x 1.5	60	9	M8	G1/8	45	10.5	13	60	6.5	23
SC-40-NPUF-R	0.850	16	40	14	15	50	103	98	25	19	M55 x 1.5	70	9	M8	G1/8	50	10.5	13	65	6.5	26
SC-50-NPUF-R	1.000	20	50	14	14	85	110	105	25	25	M65 x 1.5	80	10	M12	G1/8	58	10.5	11	75	8.5	32
SC-63-NPUF-R	1.200	20	63	15	15	140	110	105	25	25	M80 x 1.5	90	10	M12	G1/8	70	10.5	11	90	8.5	35

**Pneumatic Swing Clamp
Upper Flange Version-Left Swing**

- No Fixture hole required
- Cylinder can be bolted directly to the fixture
- Easiest mounting preparation in the swing clamp line
- Square flange design enables clamping at all four sides of the clamp
- Allows extra large parts to be clamped



Material	Aluminum Alloy Body
Finish	Black Anodizing
Acting Type	Double Acting
Force	16 - 140 kgs
Total Stroke	27-32 mm
Working Pressure	4 - 7 Bar
Swivel Angle	90° ±2°

Model No	Weight Kgs	Dimensions																			
		Piston Dia.	Bore Dia.	Swing Stroke	Clamping Stroke	Force in Kgs (5 kg/cm ²)	A Clamped	B	C	D	E	G	H	J	L	M	N	N1	P	R	S
SC-25-NPUF-L	0.700	14	25	14	14	16	92	87	25	16	M40 x 1.5	50	6	M6	M5	37	11.5	14.5	50	5.5	23
SC-32-NPUF-L	0.800	16	32	14	16	30	103	98	25	19	M50 x 1.5	60	9	M8	G1/8	45	10.5	13	60	6.5	23
SC-40-NPUF-L	0.850	16	40	14	15	50	103	98	25	19	M55 x 1.5	70	9	M8	G1/8	50	10.5	13	65	6.5	26
SC-50-NPUF-L	1.000	20	50	14	14	85	110	105	25	25	M65 x 1.5	80	10	M12	G1/8	58	10.5	11	75	8.5	32
SC-63-NPUF-L	1.200	20	63	15	15	140	110	105	25	25	M80 x 1.5	90	10	M12	G1/8	70	10.5	11	90	8.5	35