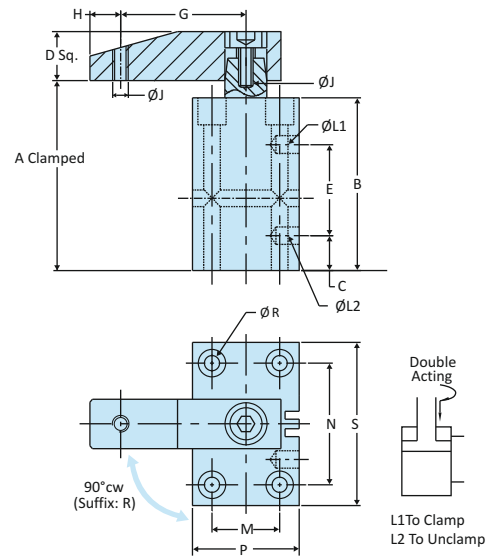
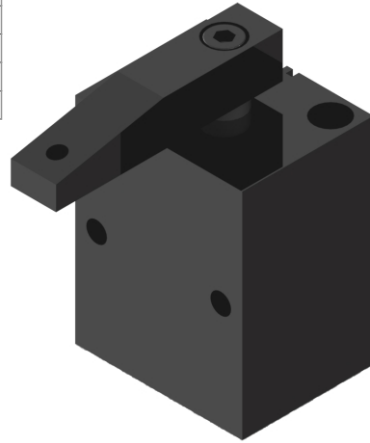


Pneumatic Swing Clamp
Block Version-Right Swing

- Block Design permits the clamp to mounted from three different faces
- Grooves on one side for Reed switch mounting
- Simple mounting preparation and easy installation 2 or 4 mounting bolts

Material	Aluminum Alloy Body
Finish	Black Anodizing
Acting Type	Double Acting
Force	16 - 140 kgs
Total Stroke	27 - 32 mm
Working Pressure	4 - 7 Bar
Swivel Angle	90° ±2°

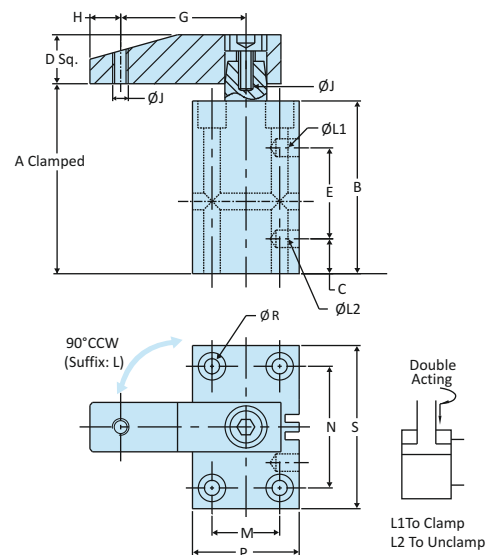
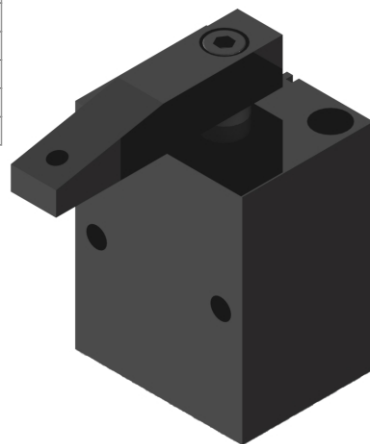


Model No	Weight Kgs	Dimensions																		
		Piston Dia.	Bore Dia.	Swing Stroke	Clamping Stroke	Force in Kgs (5 kg/cm ²)	A Clamped	B	C	D Sq.	E	G	H	J	L	M	N	P	R	S
SC-25-PB-R	0.700	14	25	13	14	16	82	78	21	16	34.5	50	6	M6 x 1.00	M5 x 0.8	20	40	35	6.5	55
SC-32-PB-R	0.900	16	32	16	14	30	96	90	21	19	51.5	60	9	M8 x 1.25	G 1/8"	30	45	45	6.5	60
SC-40-PB-R	1.100	16	40	15	15	50	96	90	22	19	50.5	70	9	M8 x 1.25	G 1/8"	37	52	55	8.5	70
SC-50-PB-R	1.200	20	50	17	15	85	105	100	25	25	53.5	80	10	M12 x 1.5	G 1/8"	46	66	65	8.5	85
SC-63-PB-R	1.400	20	63	15	15	140	107	100	28	25	52	90	10	M12 x 1.5	G 1/8"	60	80	80	10.5	100

Pneumatic Swing Clamp
Block Version-Left Swing

- Block Design permits the clamp to mounted from three different faces
- Grooves on one side for Reed switch mounting
- Simple mounting preparation and easy installation 2 or 4 mounting bolts

Material	Aluminum Alloy Body
Finish	Black Anodizing
Acting Type	Double Acting
Force	16 - 140 kgs
Total Stroke	27 - 32 mm
Working Pressure	4 - 7 Bar
Swivel Angle	90° ±2°



Model No	Weight Kgs	Dimensions																		
		Piston Dia.	Bore Dia.	Swing Stroke	Clamping Stroke	Force in Kgs (5 kg/cm ²)	A Clamped	B	C	D Sq.	E	G	H	J	L	M	N	P	R	S
SC-25-PB-L	0.700	14	25	13	14	16	82	78	21	16	34.5	50	6	M6 x 1.00	M5 x 0.8	20	40	35	6.5	55
SC-32-PB-L	0.900	16	32	16	14	30	96	90	21	19	51.5	60	9	M8 x 1.25	G 1/8"	30	45	45	6.5	60
SC-40-PB-L	1.100	16	40	15	15	50	96	90	22	19	50.5	70	9	M8 x 1.25	G 1/8"	37	52	55	8.5	70
SC-50-PB-L	1.200	20	50	17	15	85	105	100	25	25	53.5	80	10	M12 x 1.5	G 1/8"	46	66	65	8.5	85
SC-63-PB-L	1.400	20	63	15	15	140	107	100	28	25	52	90	10	M12 x 1.5	G 1/8"	60	80	80	10.5	100