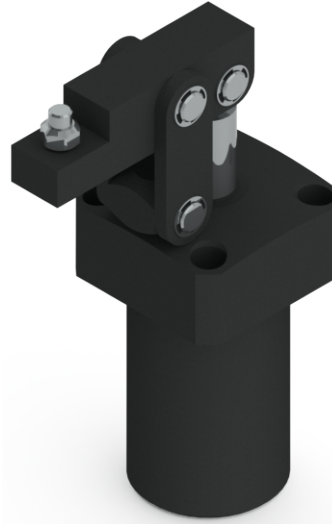
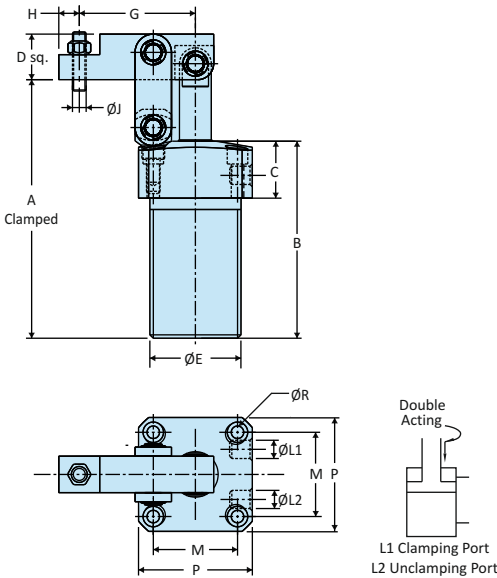


Pneumatic Link Clamps
Upper Flanged Version

- Cylinder can be bolted directly to the fixture
- Square flange design enables clamping at all four sides of the clamp
- Allows extra large parts to be clamped

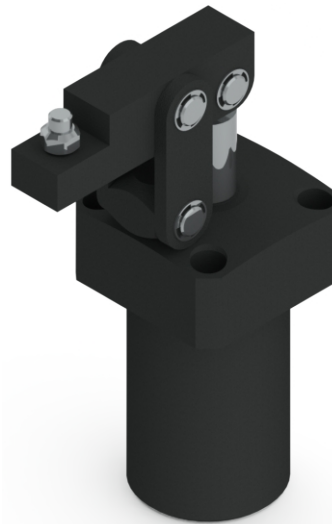
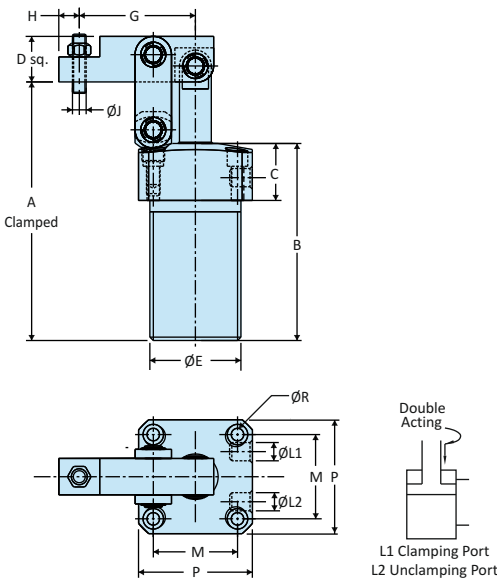


Material	Aluminum Alloy Body
Finish	Black Anodizing
Acting Type	Double Acting
Force	34 - 218 kgs
Working Pressure	4 - 7 Bar

Model No	Weight Kgs	Dimensions															
		Piston Dia.	Bore Dia.	Clamping Stroke	Force in Kgs (7 kg/cm ²)	A Clamped	B	C	D	E	G	H	J	L	M	P	R
LC-25-PUF	0.600	14	25	22	34	111.5	86.5	25	17	M40 x 1.5	41	7	M6x1.0	M5x0.8	37	50	5.5
LC-32-PUF	1.000	16	32	28	56	129.5	97.5	25	20	M50 x 1.5	52	8	M8x1.25	G1/8	45	60	6.5
LC-40-PUF	1.200	16	40	30	88	132.5	97.5	25	25	M55 x 1.5	56	10	M8x1.25	G1/8	50	65	6.5
LC-50-PUF	2.000	20	50	30	137	144	104	25	30	M65 x 1.5	63.5	14	M12x1.75	G1/8	58	75	8.5
LC-63-PUF	2.700	20	63	30	218	149	105	25	30	M80 x 1.5	74	14	M12x1.75	G1/8	70	90	8.5

Hydraulic Link Clamp
Upper Flange Version

- Cylinder can be bolted directly to the fixture
- Square flange design enables clamping at all four sides of the clamp
- Allows extra large parts to be clamped



Material	S45C Body
Finish	Black Anodizing
Acting Type	Double Acting
Force	122 - 780 kgs
Working Pressure	20 - 70 Bar

Model No	Weight Kgs	Dimensions															
		Piston Dia.	Bore Dia.	Clamping Stroke	Force in Kgs (70 kg/cm ²)	A Clamped	B	C	D	E	G	H	J	L	M	P	R
LC-25-HUF	1.200	14	25	22	122	111.5	86.5	25	17	M40 x 1.5	41	7	M6x1.0	M5x0.8	37	50	5.5
LC-32-HUF	1.800	16	32	28	201	129.5	97.5	25	20	M50 x 1.5	52	8	M8x1.25	G1/8	45	60	6.5
LC-40-HUF	2.500	16	40	30	315	132.5	97.5	25	25	M55 x 1.5	56	10	M8x1.25	G1/8	50	65	6.5
LC-50-HUF	4.000	20	50	30	490	144	104	25	30	M65 x 1.5	63.5	14	M12x1.75	G1/8	58	75	8.5
LC-63-HUF	6.500	20	63	30	780	149	105	25	30	M80 x 1.5	74	14	M12x1.75	G1/8	70	90	8.5