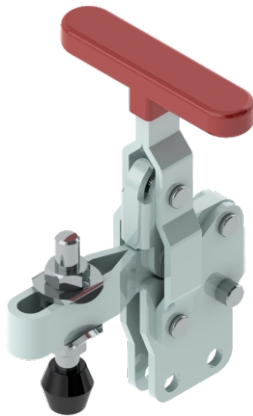
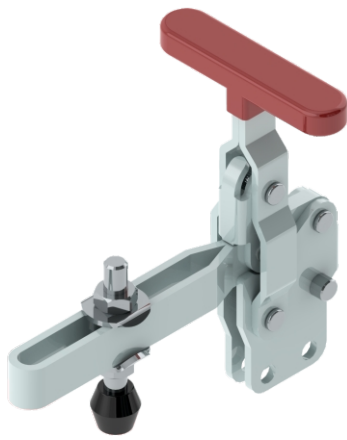
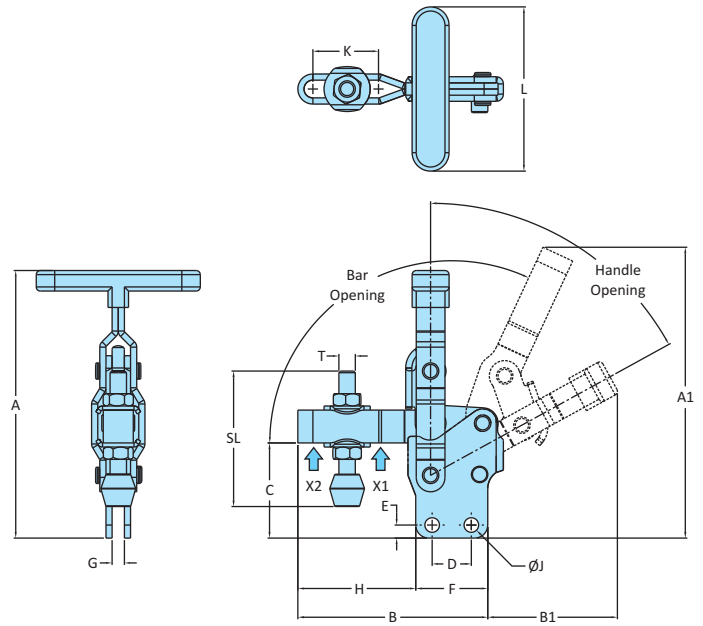


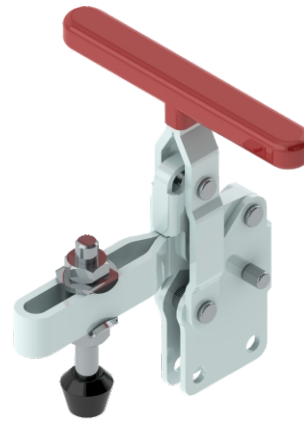
Vertical Hold Down Action  
Straight Base-T-Handle Clamps



Model No. VTC-207-TUB



Model No. VTC-207-TULB



Model No. VTC-210-TUB

Model No.	Material	Finish	Arm Type	Base Type	Supplied With		Holding Capacity	
					Spindle Assembly	Washers	X2	X1
VTC-207-TUB	Steel	Zinc Plated	Adjustable Arm	Straight Base	RT-865-2N2W	M8-WSHR	1.00 kN	1.70 kN
VTC-207-TULB	Steel	Zinc Plated	Adjustable Arm	Straight Base	RT-865-2N2W	M10-WSHR	0.70 kN	1.50 kN
VTC-210-TUB	Steel	Zinc Plated	Adjustable Arm	Straight Base	RT-1085-2N2W	M10-WSHR	1.40 kN	2.70 kN
VTC-207-TUB-SS	Stainless Steel-304	Electro Polishing	Adjustable Arm	Straight Base	RT-865-2N2W-SS	M8-WSHR-SS	1.00 kN	1.70 kN
VTC-207-TULB-SS	Stainless Steel-304	Electro Polishing	Adjustable Arm	Straight Base	RT-865-2N2W-SS	M10-WSHR-SS	0.70 kN	1.50 kN
VTC-210-TUB-SS	Stainless Steel-304	Electro Polishing	Adjustable Arm	Straight Base	RT-1085-2N2W-SS	M10-WSHR-SS	1.40 kN	2.70 kN

Model No.	Weight Kgs	Handle Opening	Bar Opening	Dimensions														
				A	A1	B	B1	C	D	E	F	G	H	J	K	L	T	SL
VTC-207-TUB	0.300	61°	115°	130.5	142	92.6	63	46.35	19.1	6.35	35.1	6	57.5	7.1	32	80	M8	66
VTC-207-TULB	0.340	61°	115°	130.5	184	139.1	63	46.35	19.1	6.35	35.1	6	104	7.1	78.5	80	M8	66
VTC-210-TUB	0.590	58°	105°	160	204.5	139.6	61.5	65.5	31.8	9	48.6	8	91	8.3	60	140	M10	85
VTC-207-TUB-SS	0.300	61°	115°	130.5	142	92.6	63	46.35	19.1	6.35	35.1	6	57.5	7.1	32	80	M8	66
VTC-207-TULB-SS	0.340	61°	115°	130.5	184	139.1	63	46.35	19.1	6.35	35.1	6	104	7.1	78.5	80	M8	66
VTC-210-TUB-SS	0.590	58°	105	160	204.5	139.6	61.5	65.5	31.8	9	48.6	8	91	8.3	60	140	M10	85