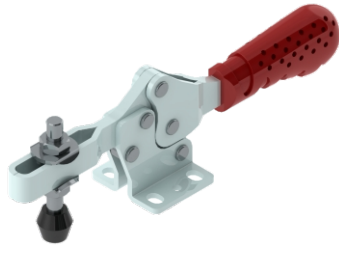
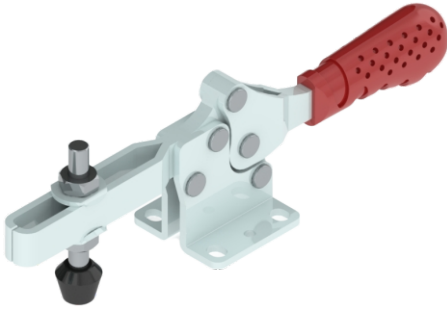


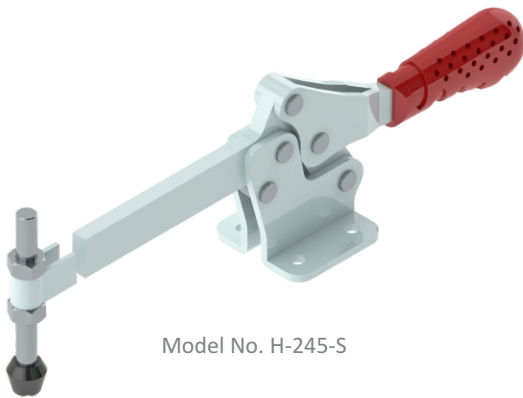
Horizontal Hold Down Action  
H-227, 237, 245 Series



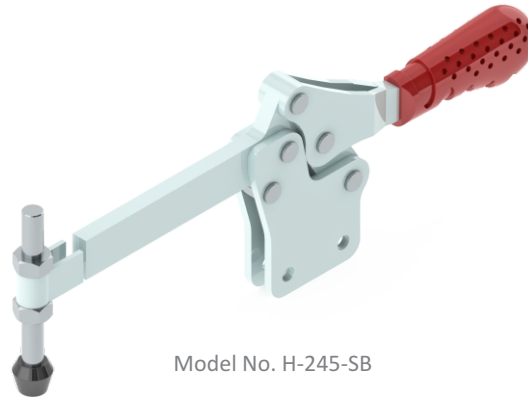
Model No. H-227-U



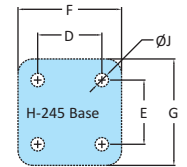
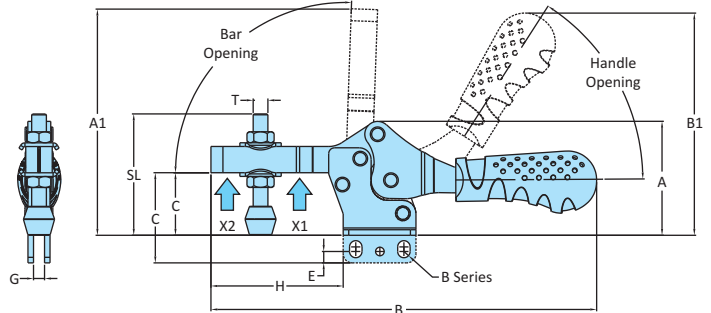
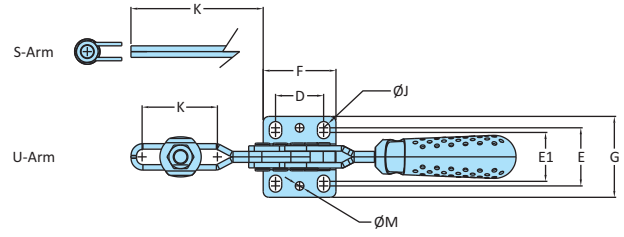
Model No. H-237-U



Model No. H-245-S



Model No. H-245-SB



Model No.	Material	Finish	Arm Type	Base Type	Supplied With		Holding Capacity	
					Spindle Assembly	Washers	X2	X1
H-227-U	Steel	Zinc Plated	Adjustable Arm	Flanged Base	RT-865-2N2W	M8-WSHR	1.00 kN	2.20 kN
H-227-UB	Steel	Zinc Plated	Adjustable Arm	Straight Base	RT-865-2N2W	M8-WSHR	1.00 kN	2.20 kN
H-237-U	Steel	Zinc Plated	Adjustable Arm	Flanged Base	RT-1085-2N2W	M10-WSHR	1.30 kN	3.40 kN
H-237-UB	Steel	Zinc Plated	Adjustable Arm	Straight Base	RT-1085-2N2W	M10-WSHR	1.30 kN	3.40 kN
H-245-S	Steel	Zinc Plated	Solid Arm	Flanged Base	RT-12115-2N	M12-WSHR	1.80 kN	4.40 kN
H-245-SB	Steel	Zinc Plated	Solid Arm	Straight Base	RT-12115-2N	M12-WSHR	1.80 kN	4.40 kN
H-245-U	Steel	Zinc Plated	Adjustable Arm	Flanged Base	RT-12115-2N2W	M12-WSHR	1.80 kN	4.40 kN
H-245-UB	Steel	Zinc Plated	Adjustable Arm	Straight Base	RT-12115-2N2W	M12-WSHR	1.80 kN	4.40 kN
H-227-U-SS	Stainless Steel-304	Electro Polishing	Adjustable Arm	Flanged Base	RT-865-2N2W-SS	M8-WSHR-SS	1.00 kN	2.20 kN
H-227-UB-SS	Stainless Steel-304	Electro Polishing	Adjustable Arm	Straight Base	RT-865-2N2W-SS	M8-WSHR-SS	1.00 kN	2.20 kN

Model No.	Weight Kgs	Handle Opening	Bar Opening	Dimensions																
				A	A1	B	B1	C	D	E	E1	F	G	H	J	K	L	M	T	SL
H-227-U	0.320	60°	92°	62	123	210	121	34	26.2	31.6	26.6	39.6	44	72	6.8x9.3	41	13.1	4.7	M8	66
H-227-UB	0.320	60°	92°	77	138	210	136	49	26.2	6.2	-	39.6	6	72	6.8x9.3	41	13.1	4.7	M8	66
H-237-U	0.760	60°	92°	80	183	282	150	44	41.4	43	39	57.2	58	106.5	8.5x10.5	80	20.7	5.7	M10	86
H-237-UB	0.750	60°	92°	99	202	282	168.5	63	41.4	9	-	57.2	8	106.5	8.5x10.5	80	20.7	5.7	M10	86
H-245-S	1.460	70°	100°	109	216	355	219	58	41.4	41.4	-	66.8	68.6	134	8.7	134	-	-	M12	116
H-245-SB	1.460	70°	100°	130.5	238	355	241	80	41.4	13.4	-	66.8	10	134	8.7	134	-	-	M12	116
H-245-U	1.420	70°	100°	109	210	329	219	58	41.4	41.4	-	66.8	68.6	128	8.7	80	-	-	M12	116
H-245-UB	1.410	70°	100°	130.5	232	329	241	80	41.4	12.8	-	66.8	10	128	8.7	80	-	-	M12	116
H-227-U-SS	0.320	60°	92°	62	123	210	121	34	26.2	31.6	26.6	39.6	44	72	6.8x9.3	41	13.1	4.7	M8	66
H-227-UB-SS	0.320	60°	92°	77	138	210	136	49	26.2	6.2	-	39.6	6	72	6.8x9.3	41	13.1	4.7	M8	66